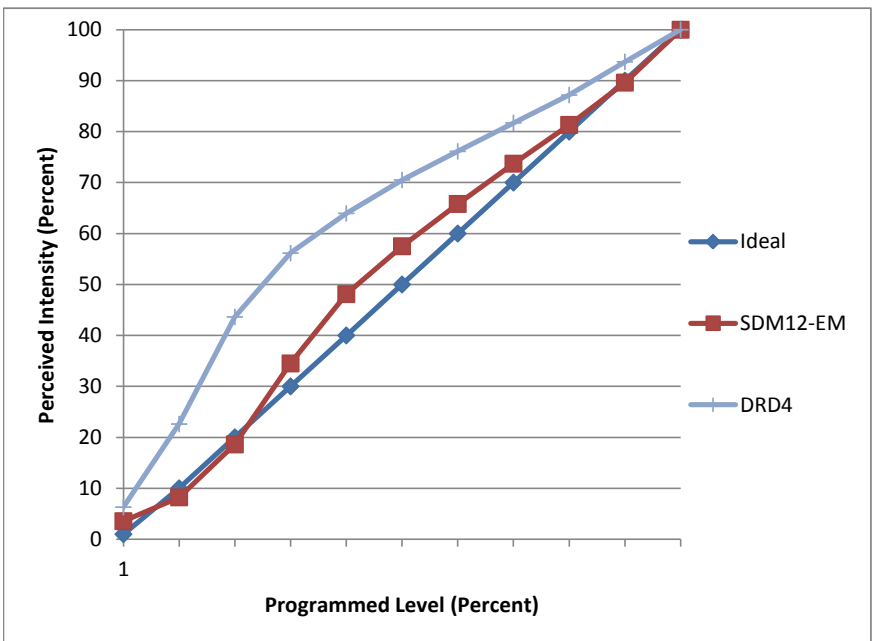


**Manufacturer** TCP  
**Model** LED11E26A1941K  
**Description** A19 Lamp  
**Driver** Integrated  
**Nominal Power (W)** 11  
**Dimming Control** Forward-phase  
**Product Range**  
**Test Date** 8/18/2014

Dimmer Tested Against:	<b>SDM12-EM</b>	<b>DRD4</b>	
Pass/Fail	Pass	Pass	
Best-Fit Power Profile:		Standard	
Minimum ON	1.5		
Maximum ON	90		
Adjust	100		
Light Output Range (vs. non-dimmed)			
Maximum (Perceived), 120V	95.9%	100.0%	
Minimum (Perceived)	3.4%	6.3%	
Minimum (Measured)	0.1%	0.4%	

**Linearity Curves (Best-fit Power Profile Applied):**



**Observations:**

DRD4 requires more than one lamp as load. DRD4 Minimum on 6%. Flicker exhibited below. ScenePoint OK with single lamp load, set Minimum On to 3.