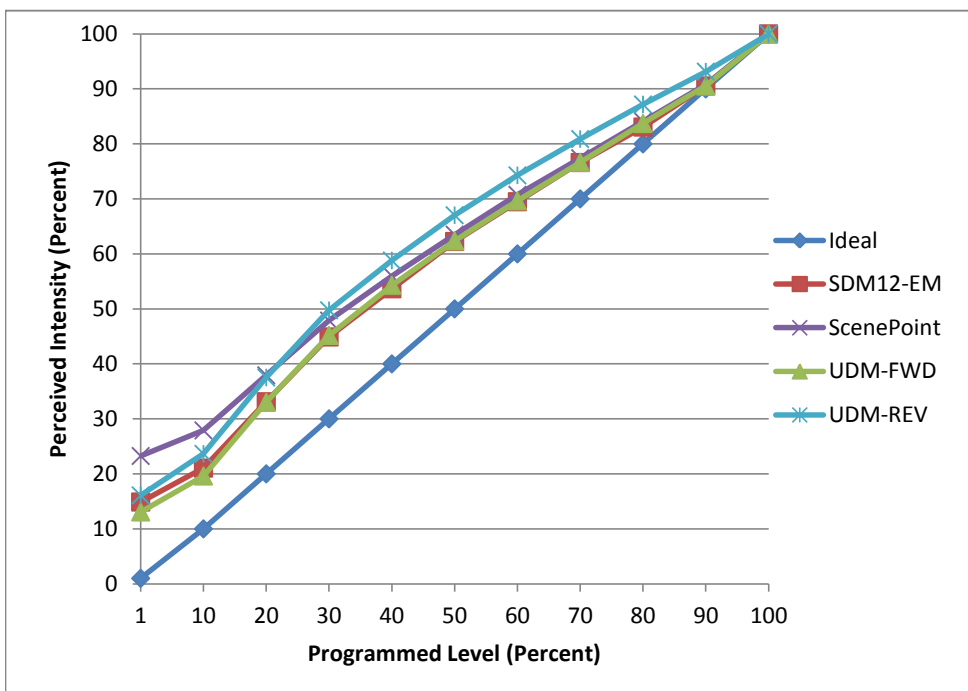


Manufacturer Satco
Model S9574
Description Flame tip Candelabra
Driver Integrated
Nominal Power (W) 4.5
Dimming Control Forward and Reverse
Product Range -
Test Date 9/12/2016

Dimmer Tested Against:	SDM12-EM	Scenepoint	UDM-FWD	UDM-REV
Pass/Fail	Pass	Pass	Pass	Pass
Best-Fit Power Profile:				
Minimum ON	2	4	2	2
Maximum ON	93	94	94	91
Adjust	100	100	100	100
Light Output Range (vs. non-dimmed)				
Maximum (Perceived)	95.1%	95.0%	95.2%	95.1%
Minimum (Perceived)	14.1%	22.1%	12.4%	15.3%
Minimum (Measured)	2.0%	4.9%	1.5%	2.3%

Linearity Curves (Best-fit Power Profile Applied):



Observations:

bgk