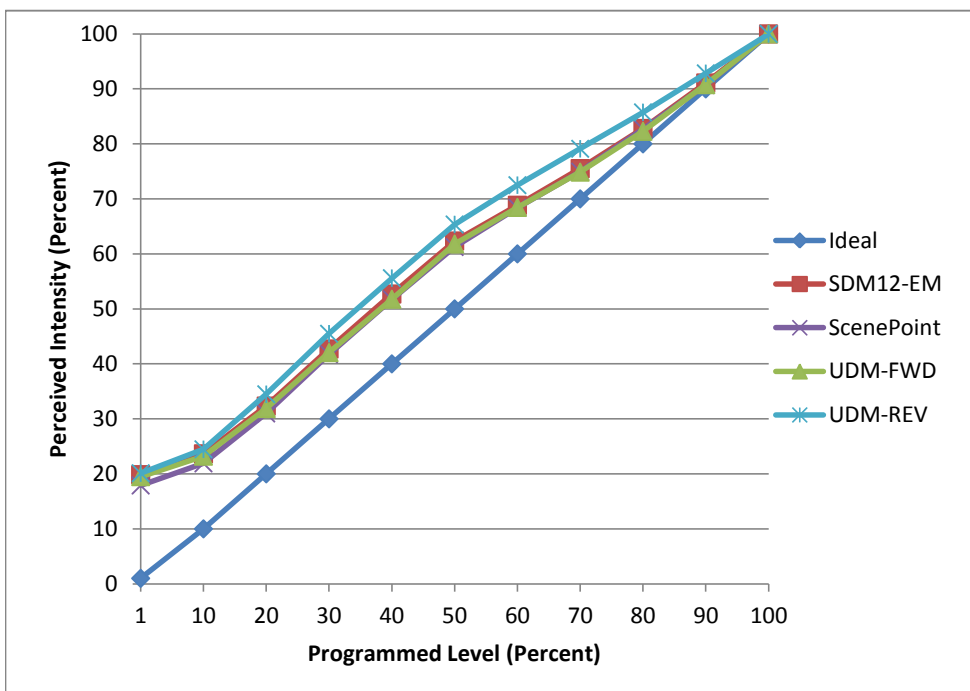


Manufacturer Satco
Model S9110
Description A19 Lamp
Driver Integrated
Nominal Power (W) 10
Dimming Control Forward and Reverse
Product Range -
Test Date 8/31/2016

Dimmer Tested Against:	SDM12-EM	Scenepoint	UDM-FWD	UDM-REV
Pass/Fail	Pass	Pass	Pass	Pass
Best-Fit Power Profile:				
Minimum ON	4	4	4	4
Maximum ON	89	92	91	87
Adjust	100	100	100	100
Light Output Range (vs. non-dimmed)				
Maximum (Perceived)	95.0%	95.4%	95.1%	95.1%
Minimum (Perceived)	18.9%	17.1%	18.5%	19.1%
Minimum (Measured)	3.6%	2.9%	3.4%	3.7%

Linearity Curves (Best-fit Power Profile Applied):



Observations:

bgk