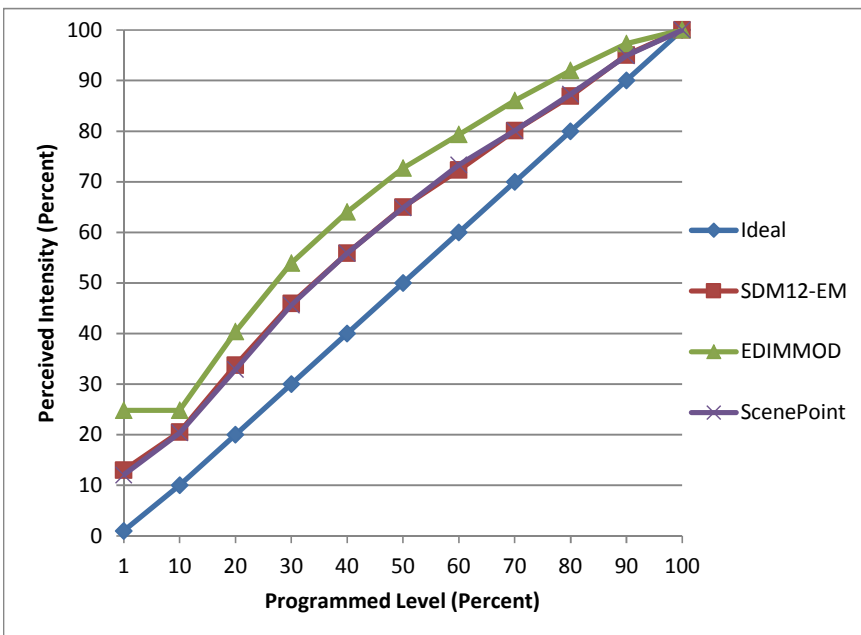


Manufacturer Premier Electrical Products
Model LED7PAR16G5/D/30/ES
Description PAR16 Lamp
Driver integrated
Nominal Power (W) 6.5
Dimming Control forward- and reverse-phase
Product Range
Test Date 2/16/2016

Dimmer Tested Against:	SDM12-EM	EDIMMOD	ScenePoint
Pass/Fail	Pass	Pass	Pass
Best-Fit Power Profile:			
Minimum ON	0	0	1
Maximum ON	90	72	90
Adjust	100	100	100
Light Output Range (vs. non-dimmed)			
Maximum (Perceived)	95.1%	95.3%	95.9%
Minimum (Perceived)	12.4%	23.7%	11.6%
Minimum (Measured)	1.5%	5.6%	1.3%

Linearity Curves (Best-fit Power Profile Applied):



Observations: