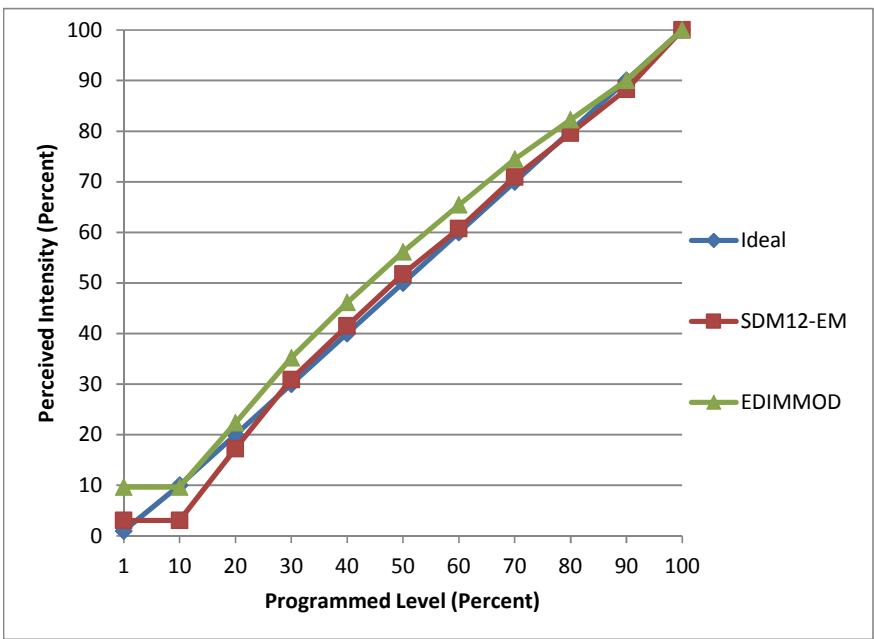


Manufacturer Nora
Model NRM-411L12CDWW
Description 4" Downlight - fixed
Driver CREE LMD125-0018C440-1010000
Nominal Power (W) 15.75
Dimming Control forward- and reverse-phase
Product Range Marquise
Test Date 1/8/2015

| Dimmer Tested Against: | SDM12-EM | EDIMMOD | |
|--|----------|---------|--|
| Pass/Fail | Pass | Pass | |
| Best-Fit Power Profile: | | | |
| Minimum ON | 0 | 0 | |
| Maximum ON | 65 | 57 | |
| Adjust | 100 | 100 | |
| Light Output Range (vs. non-dimmed) | | | |
| Maximum (Perceived) | 95.7% | 95.5% | |
| Minimum (Perceived) | 2.9% | 9.2% | |
| Minimum (Measured) | 0.1% | 0.9% | |

Linearity Curves (Best-fit Power Profile Applied):



Observations:

One of three samples didn't power up.
 Designed for warmth at low dimming level, inconsistent color from one sample to next.