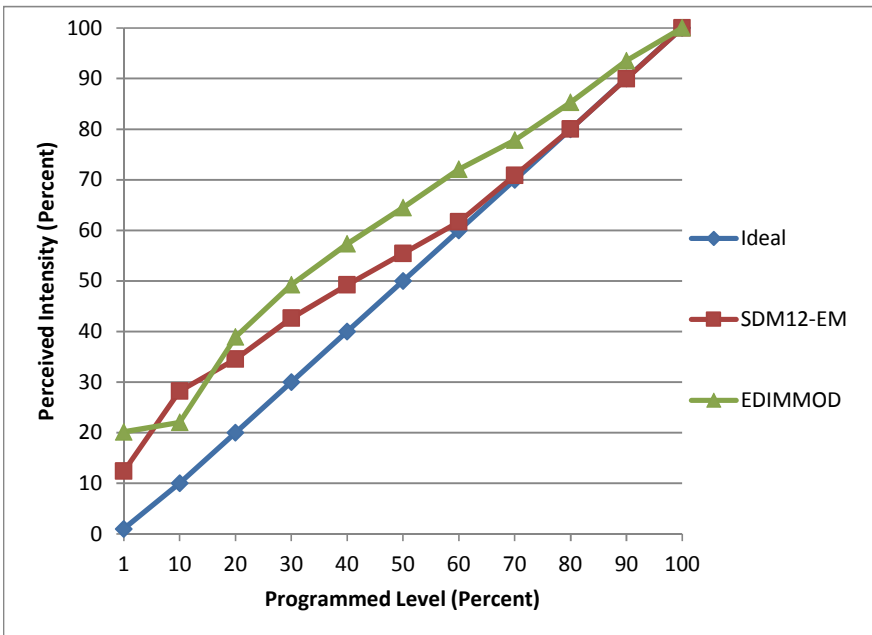


Manufacturer NICOR
Model DLR56-2709-120-4K-WH
Description 5" & 6" Recessed LED Downlight Kit
Driver integrated
Nominal Power (W) 13
Dimming Control forward- and reverse-phase
Product Range
Test Date 10/30/2015

Dimmer Tested Against:	SDM12-EM	EDIMMOD	
Pass/Fail	Pass	Pass	
Best-Fit Power Profile:			
Minimum ON	0	0	
Maximum ON	94	88	
Adjust	100	100	
Light Output Range (vs. non-dimmed)			
Maximum (Perceived)	95.0%	95.0%	
Minimum (Perceived)	11.8%	19.2%	
Minimum (Measured)	1.4%	3.7%	

Linearity Curves (Best-fit Power Profile Applied):



Observations:

No minimum load issues with single fixture.