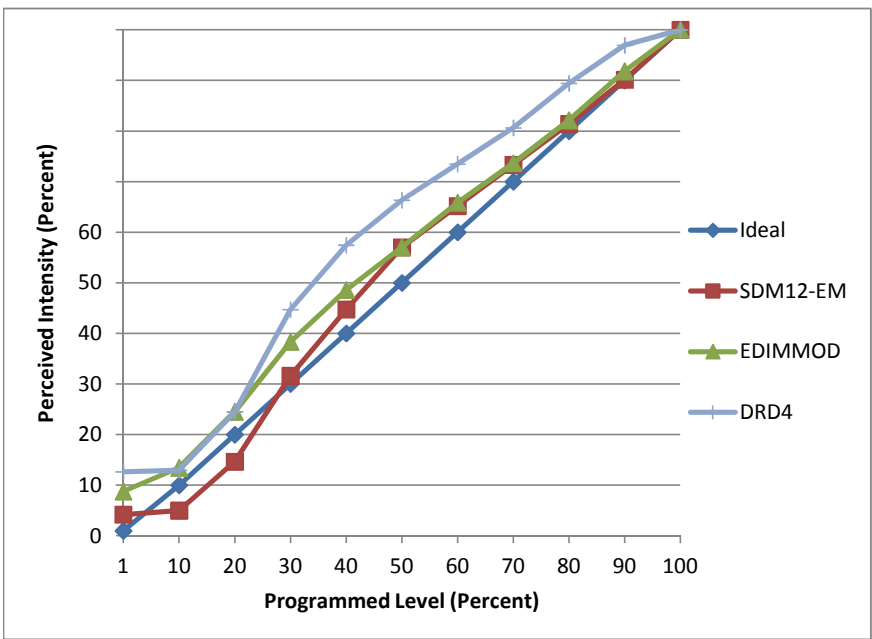


**Manufacturer** Minka-Lavery  
**Model** Kirkham - 1  
**Description** Wall-mount Sconce  
**Driver** Integral  
**Nominal Power (W)** 10  
**Dimming Control** forward- and reverse-phase  
**Product Range**  
**Test Date** 8/4/2014

Dimmer Tested Against:	SDM12-EM	EDIMMOD	DRD4
Pass/Fail	Pass	Pass	Pass
Best-Fit Power Profile:			Standard
Minimum ON	5	7	
Maximum ON	85	80	
Adjust	75	95	
Light Output Range (vs. non-dimmed)			
Maximum (Perceived)	96.4%	95.0%	100.0%
Minimum (Perceived)	4.0%	8.3%	12.6%
Minimum (Measured)	0.2%	0.7%	1.6%

Linearity Curves (Best-fit Power Profile Applied):



**Observations:**

DRD4 non-linearity at bottom of range: dropping from 1% to 2%, intensity doubles.