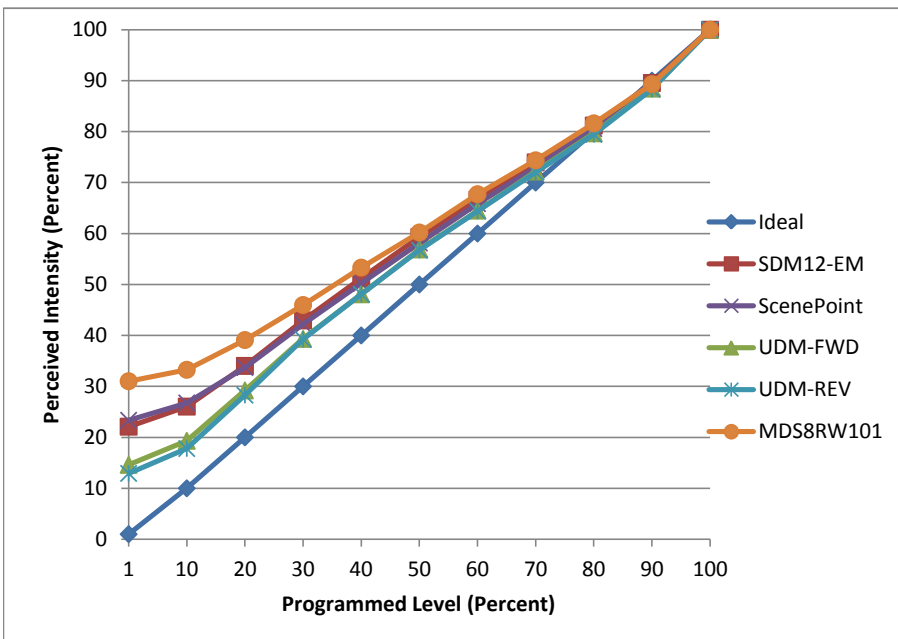


Manufacturer LumiMAX
Model GU10 5W COB
Description GU10 Lamp
Driver Integrated
Nominal Power (W) 5
Dimming Control Forward and Reverse Phase
Product Range -
Test Date 9/11/2017

Dimmer Tested Against:	SDM12-EM	ScenePoint	UDM-FWD	UDM-REV	MDS8RW101
Pass/Fail	Pass	Pass	Pass	Pass	Pass
Best-Fit Power Profile:					
Minimum ON	2	3	1	1	5
Maximum ON	93	95	95	95	94
Adjust	100	100	100	100	100
Light Output Range (vs. non-dimmed)					
Maximum (Perceived), 120V	95.0%	95.0%	95.3%	95.6%	95.1%
Minimum (Perceived)	21.0%	22.2%	13.9%	12.4%	29.5%
Minimum (Measured)	4.4%	4.9%	1.9%	1.5%	8.7%

Linearity Curves (Best-fit Power Profile Applied):



Observations:

bgk