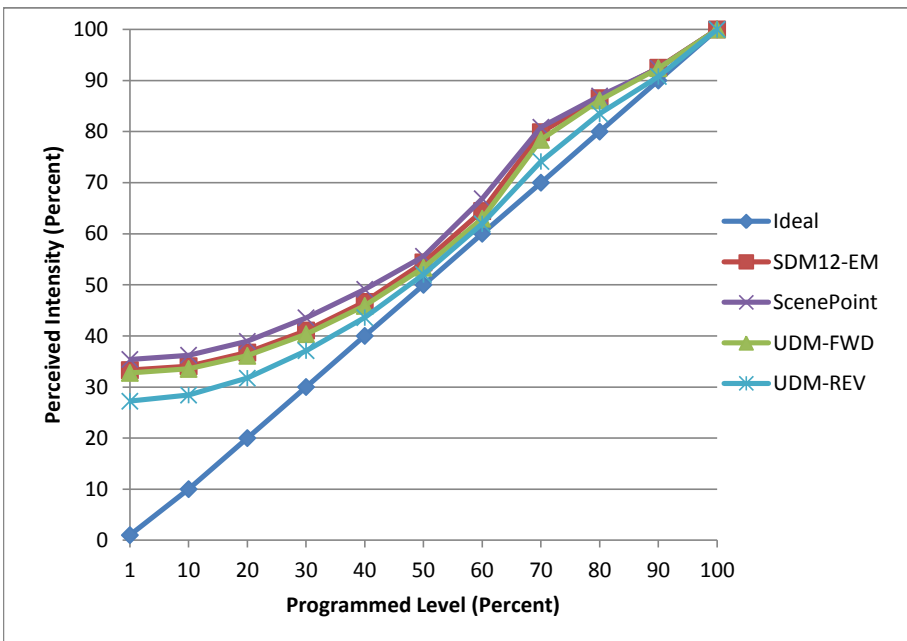


**Manufacturer** Liteline  
**Model** P38LED19W-40KSP-WH  
**Description** PAR 38 Lamp  
**Driver** Integrated  
**Nominal Power (W)** 19  
**Dimming Control** Forward and Reverse  
**Product Range** -  
**Test Date** 1/16/2017 1/16/2017 1/16/2017 1/13/2017

Dimmer Tested Against:	SDM12-EM	Scenepoint	UDM-FWD	UDM-REV
Pass/Fail	Pass	Pass	Pass	Pass
<b>Best-Fit Power Profile:</b>				
Minimum ON	20	23	20	13
Maximum ON	93	94	93	93
Adjust	100	100	100	100
<b>Light Output Range (vs. non-dimmed)</b>				
Maximum (Perceived)	95.5%	95.9%	95.8%	95.6%
Minimum (Perceived)	31.8%	34.0%	31.4%	26.0%
Minimum (Measured)	10.1%	11.5%	9.9%	6.8%

Linearity Curves (Best-fit Power Profile Applied):



Observations:

bgk