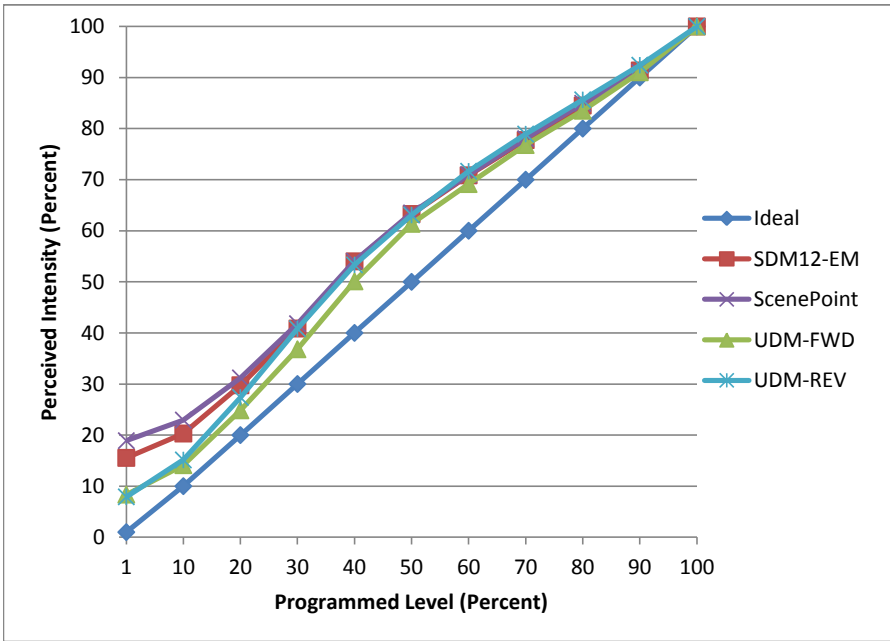


**Manufacturer** Liteline  
**Model** P38LED19W-30KFL-WH  
**Description** PAR 38 Lamp  
**Driver** Integrated  
**Nominal Power (W)** 19  
**Dimming Control** Forward and Reverse  
**Product Range**  
**Test Date** 5/10/2016

Dimmer Tested Against:	SDM12-EM	ScenePoint	UDM-FWD	UDM-REV
Pass/Fail	Pass	Pass	Pass	Pass
<b>Best-Fit Power Profile:</b>				
Minimum ON	2	3	1	1
Maximum ON	93	94	93	87
Adjust	100	100	100	100
<b>Light Output Range (vs. non-dimmed)</b>				
Maximum (Perceived)	95.2%	95.1%	95.0%	95.2%
Minimum (Perceived)	14.8%	18.0%	7.9%	7.5%
Minimum (Measured)	2.2%	3.2%	0.6%	0.6%

Linearity Curves (Best-fit Power Profile Applied):



Observations:

bgk