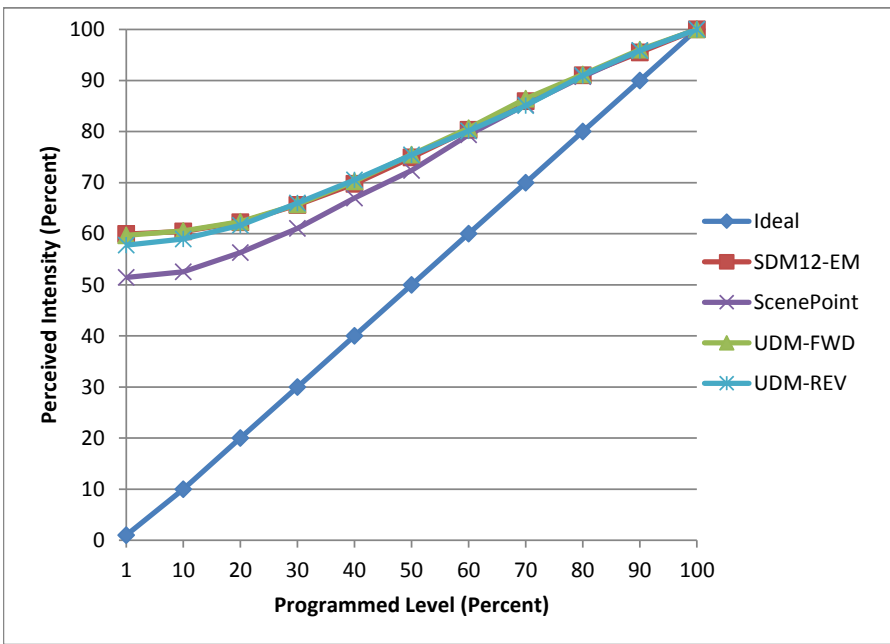


Manufacturer Liteline
Model MR16LED6W-30K-WH
Description MR16 Lamp
Driver Ambiance 9454-12 (REV), Juno IC44N (FWD)
Nominal Power (W) 6
Dimming Control Forward and Reverse
Product Range
Test Date 5/31/2016

Dimmer Tested Against:	SDM12-EM	ScenePoint	UDM-FWD	UDM-REV
Pass/Fail	Pass	Pass	Pass	Pass
Best-Fit Power Profile:				
Minimum ON	20	20	22	17
Maximum ON	26	29	28	32
Adjust	100	100	100	100
Light Output Range (vs. non-dimmed)				
Maximum (Perceived)	95.1%	95.4%	95.5%	95.2%
Minimum (Perceived)	57.0%	49.1%	57.0%	55.0%
Minimum (Measured)	32.5%	24.1%	32.5%	30.2%

Linearity Curves (Best-fit Power Profile Applied):



Observations:

Minimum Load issues creates
 Loud buzzing at full brightness on SDM-12 and while dimming on scenepoint up to ~70%

bgk