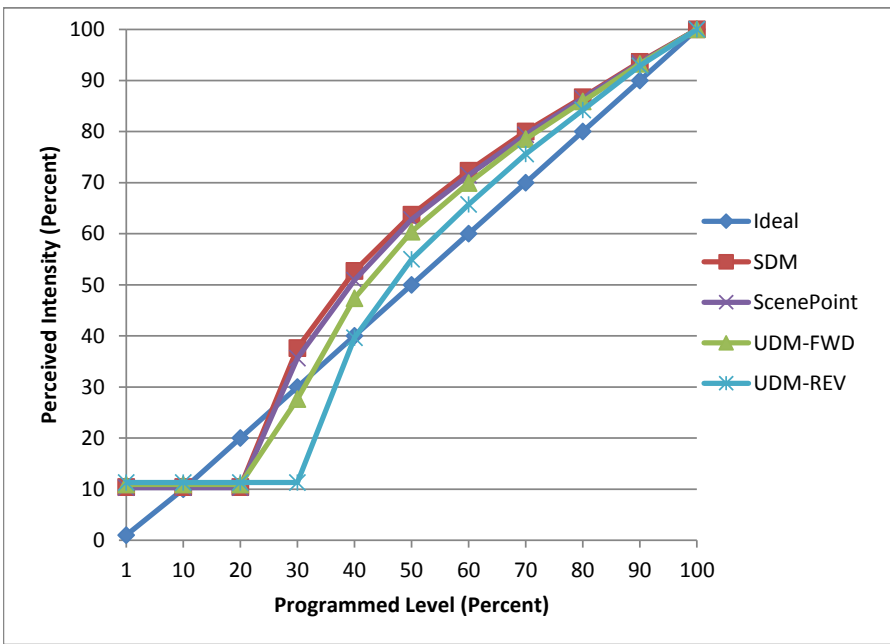


Manufacturer Liteline
Model LED-TP2-12-WW
Description Indoor LED Tape Light
Driver Lutron LED-HWBDIM3-24-40
Nominal Power (W) 2.8
Dimming Control Forward and Reverse
Product Range
Test Date 6/9/2016

Dimmer Tested Against:	SDM12-EM	ScenePoint	UDM-FWD	UDM-REV
Pass/Fail	Pass	Pass	Pass	Pass
Best-Fit Power Profile:				
Minimum ON	5	7	1	1
Maximum ON	84	86	86	81
Adjust	-25	-25	-25	0
Light Output Range (vs. non-dimmed)				
Maximum (Perceived)	95.0%	95.8%	95.4%	94.9%
Minimum (Perceived)	9.9%	9.9%	10.4%	10.7%
Minimum (Measured)	1.0%	1.0%	1.1%	1.2%

Linearity Curves (Best-fit Power Profile Applied):



Observations:

Not Recommended for Triac dimming

bgk