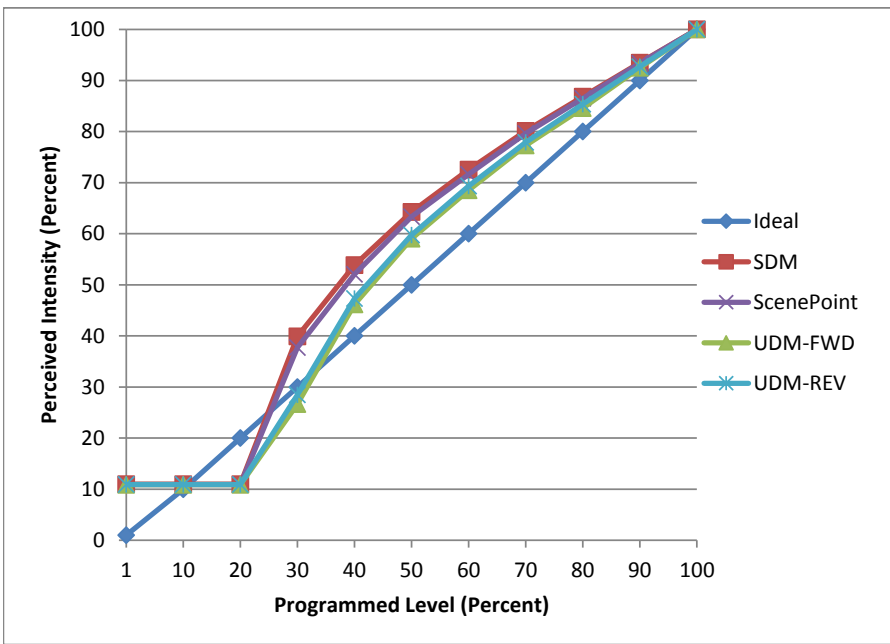


Manufacturer Liteline
Model LED-STR-12WW
Description LED Strip Light
Driver Lutron LED-HWBDIM3-24-40
Nominal Power (W) 3.6
Dimming Control Forward and Reverse
Product Range
Test Date 6/9/2016

Dimmer Tested Against:	SDM12-EM	ScenePoint	UDM-FWD	UDM-REV
Pass/Fail	Pass	Pass	Pass	Pass
Best-Fit Power Profile:				
Minimum ON	7	9	1	1
Maximum ON	84	86	87	86
Adjust	-25	-25	-25	-25
Light Output Range (vs. non-dimmed)				
Maximum (Perceived)	95.2%	96.0%	95.9%	95.9%
Minimum (Perceived)	10.5%	10.5%	10.4%	10.5%
Minimum (Measured)	1.1%	1.1%	1.1%	1.1%

Linearity Curves (Best-fit Power Profile Applied):



Observations:
 Minimum Load req.

bgk