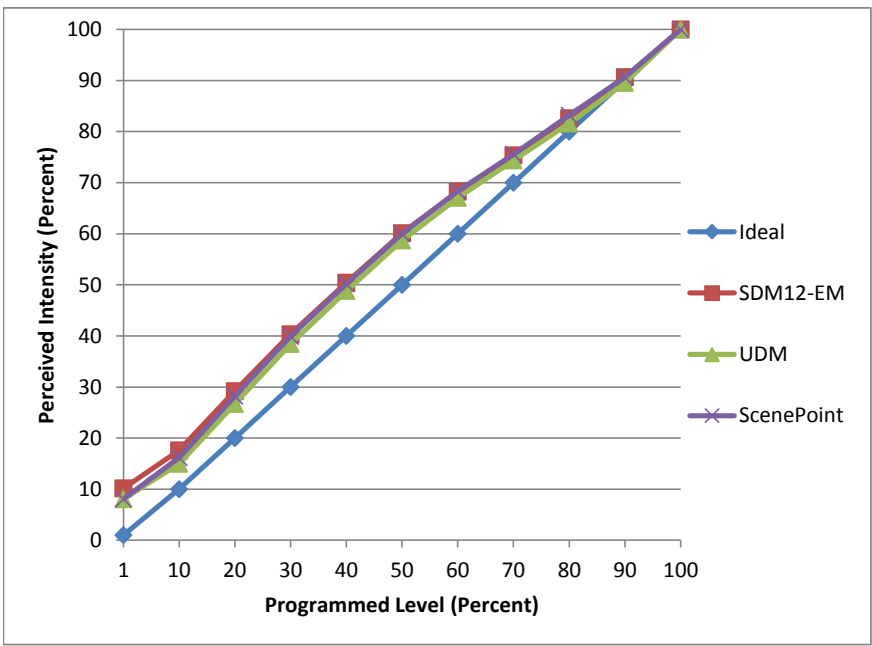


Manufacturer Liteline
Model G4-P20LED8W-30KSP
Description PAR20
Driver Integrated
Nominal Power (W) 8
Dimming Control Forward and Reverse
Product Range
Test Date 4/14/2016

Dimmer Tested Against:	SDM12-EM	UDM	ScenePoint
Pass/Fail	Pass	Pass	Pass
Best-Fit Power Profile:			
Minimum ON	1	1	1
Maximum ON	92	94	92
Adjust	100	100	100
Light Output Range (vs. non-dimmed)			
Maximum (Perceived)	95.0%	95.5%	95.4%
Minimum (Perceived)	9.7%	7.7%	7.7%
Minimum (Measured)	0.9%	0.6%	0.6%

Linearity Curves (Best-fit Power Profile Applied):



Observations:

bgk