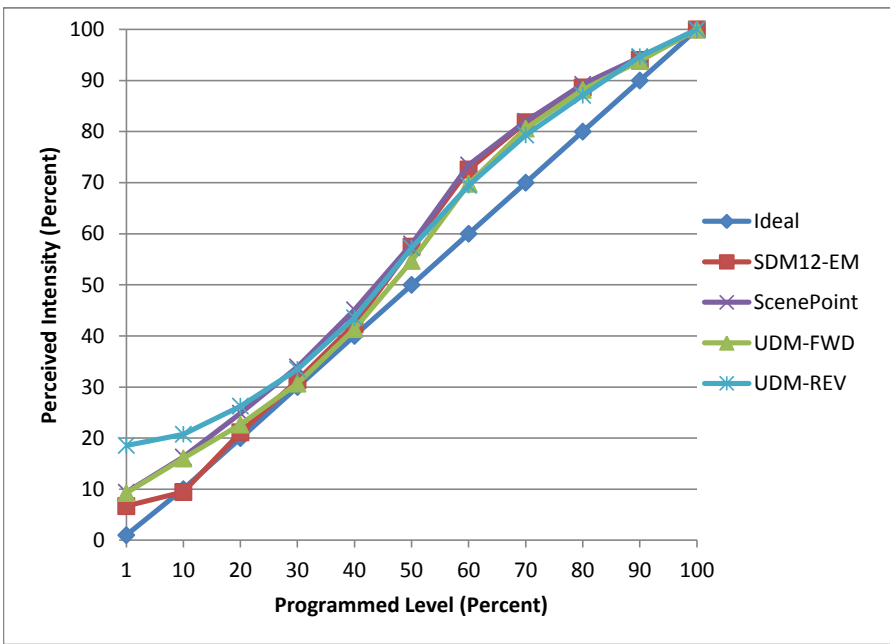


**Manufacturer** Liteline  
**Model** B11LED5W-27K-WH  
**Description** Candelabra  
**Driver** Integrated  
**Nominal Power (W)** 4.9  
**Dimming Control** Forward and Reverse  
**Product Range**  
**Test Date** 5/3/2016

| Dimmer Tested Against:                     | SDM12-EM | ScenePoint | UDM-FWD | UDM-REV |
|--|----------|------------|---------|---------|
| Pass/Fail                                  | Pass     | Pass       | Pass    | Pass    |
| <b>Best-Fit Power Profile:</b>             |          |            |         |         |
| Minimum ON                                 | 12       | 15         | 15      | 9       |
| Maximum ON                                 | 88       | 88         | 90      | 51      |
| Adjust                                     | 100      | 100        | 100     | 100     |
| <b>Light Output Range (vs. non-dimmed)</b> |          |            |         |         |
| Maximum (Perceived)                        | 95.4%    | 95.1%      | 95.2%   | 95.2%   |
| Minimum (Perceived)                        | 6.4%     | 8.9%       | 8.8%    | 17.7%   |
| Minimum (Measured)                         | 0.4%     | 0.8%       | 0.8%    | 3.1%    |

**Linearity Curves (Best-fit Power Profile Applied):**



**Observations:**

bgk