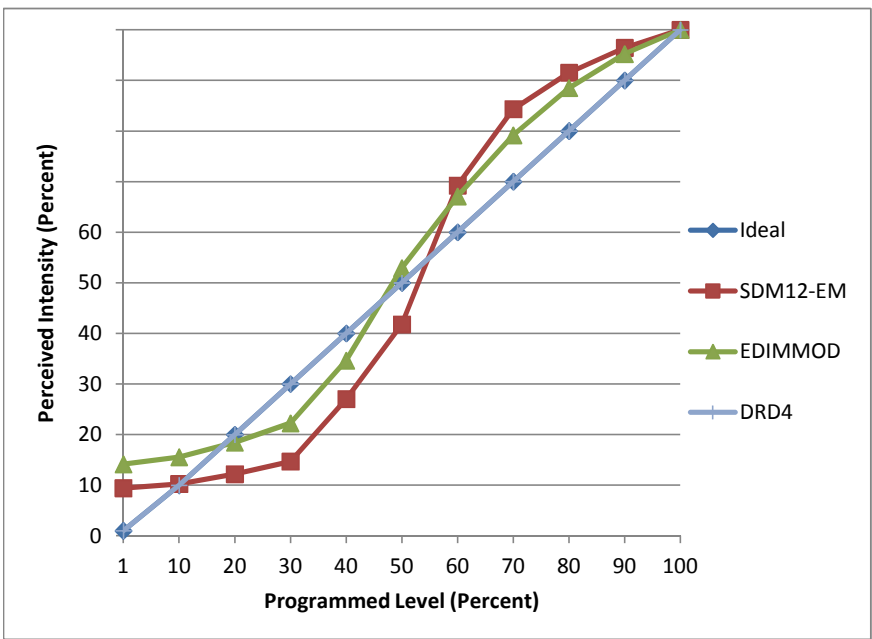


Manufacturer LightLab
Model M31-
Description Line-voltage track head (tested at 120VAC)
Driver Integrated
Nominal Power (W) 27
Dimming Control Forward- and Reverse-phase
Product Range M31
Test Date 4/7/2014

Dimmer Tested Against:	SDM12-EM	EDIMMOD	DRD4
Pass/Fail	Fail	Pass	Fail
Best-Fit Power Profile:			Standard
Minimum ON	3	3	
Maximum ON	65	65	
Adjust	100	100	
Light Output Range (vs. non-dimmed)			
Maximum (Perceived)	95.5%	95.3%	100.0%
Minimum (Perceived)	9.0%	13.5%	1.0%
Minimum (Measured)	0.8%	1.8%	0.0%

Linearity Curves (Best-fit Power Profile Applied):

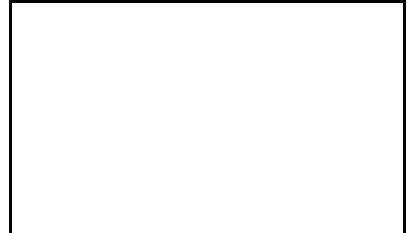


Observations:

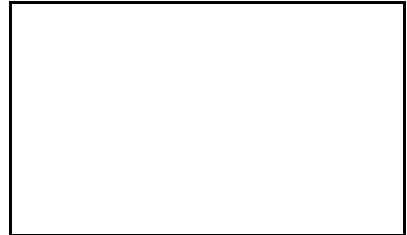
Light flickers at 38% - 41% in forward-phase mode. Settles out elsewhere in range. Range-specific flicker confirmed independently on two other forward-phase dimmers.

Forward-phase

100% Dim Level Waveform Capture

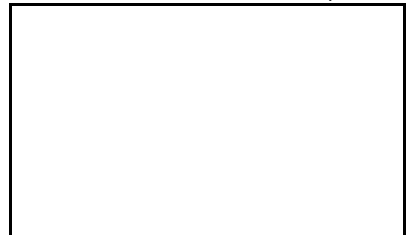


50% Dim Level Waveform Capture



Reverse-phase

100% Dim Level Waveform Capture



50% Dim Level Waveform Capture

