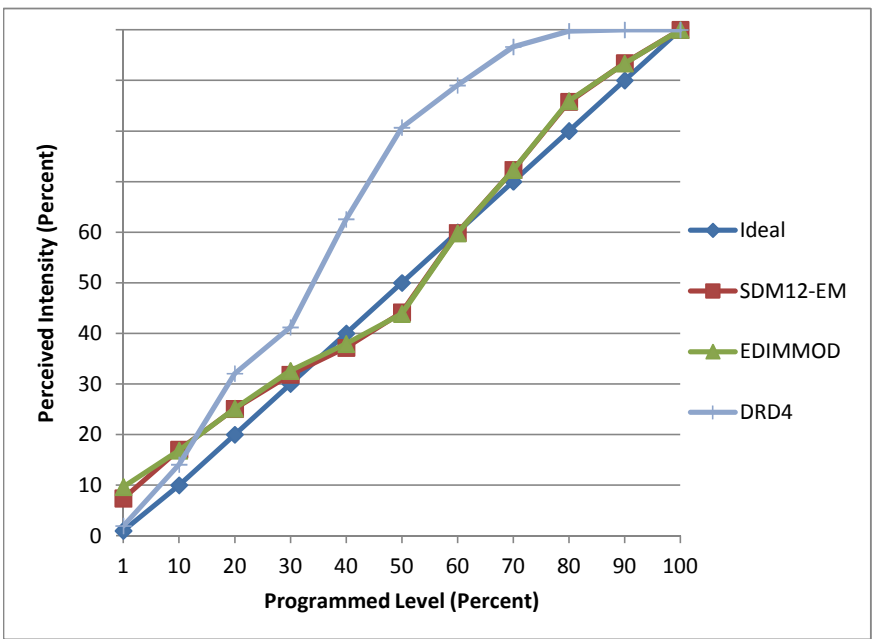


**Manufacturer** Juno  
**Model** IC1LWDG3  
**Description** Recessed LED Fixture, 4"  
**Driver** Integrated  
**Nominal Power (W)** 14.5  
**Dimming Control** Phase-modulation, forward- and reverse-phase  
**Product Range**  
**Test Date** 2/20/2014

Dimmer Tested Against:	SDM12-EM	EDIMMOD	DRD4
Pass/Fail	pass	pass	pass
Best-Fit Power Profile:			STD
Minimum ON	5	2.5	
Maximum ON	65	55	
Adjust	80	90	
Light Output Range (vs. non-dimmed)			
Maximum (Perceived)	97.3%	95.7%	100.0%
Minimum (Perceived)	7.2%	9.3%	1.9%
Minimum (Measured)	0.5%	0.9%	0.0%

Linearity Curves (Best-fit Power Profile Applied):



**Observations:**

DRD4 Minimum On level is 8%.

**Forward-phase**

100% Dim Level Waveform Capture

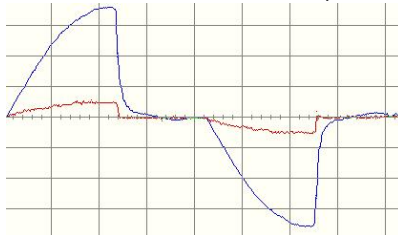


50% Dim Level Waveform Capture



**Reverse-phase**

100% Dim Level Waveform Capture



50% Dim Level Waveform Capture

