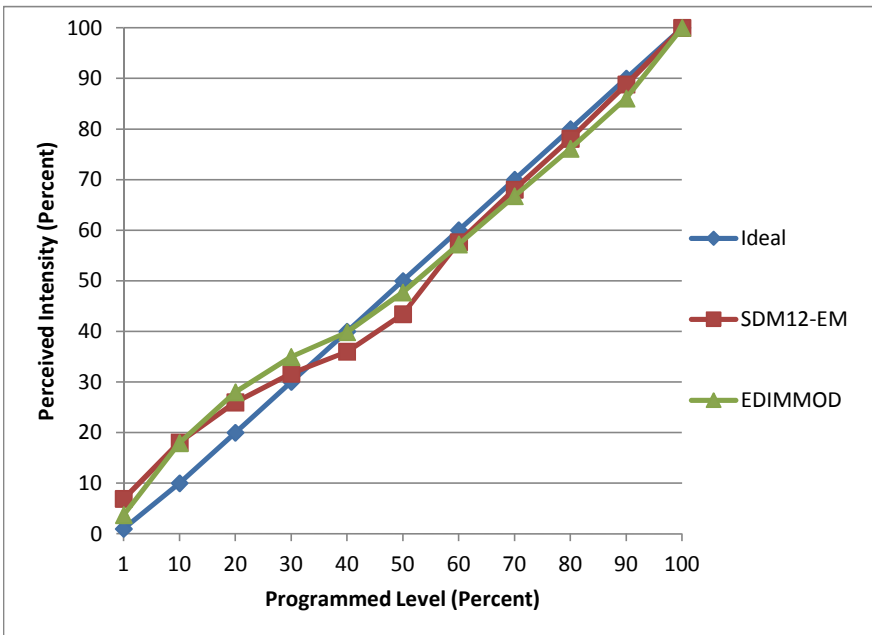


Manufacturer Halo
Model RL460WH930PK
Description 4" LED Retrofit Baffle Trim
Driver Cooper XEL-A012CA-035-X24-TA01
Nominal Power (W) 10.5
Dimming Control Forward- and reverse-phase
Product Range RL4 Series
Test Date 8/13/2015

Dimmer Tested Against:	SDM12-EM	EDIMMOD	
Pass/Fail	Pass	Pass	
Best-Fit Power Profile:			
Minimum ON	2.5	0	
Maximum ON	93	96	
Adjust	30	60	
Light Output Range (vs. non-dimmed)			
Maximum (Perceived)	95.3%	95.0%	
Minimum (Perceived)	6.6%	3.5%	
Minimum (Measured)	0.4%	0.1%	

Linearity Curves (Best-fit Power Profile Applied):



Observations:

Not compatible with the ScenePoint Dimmer.