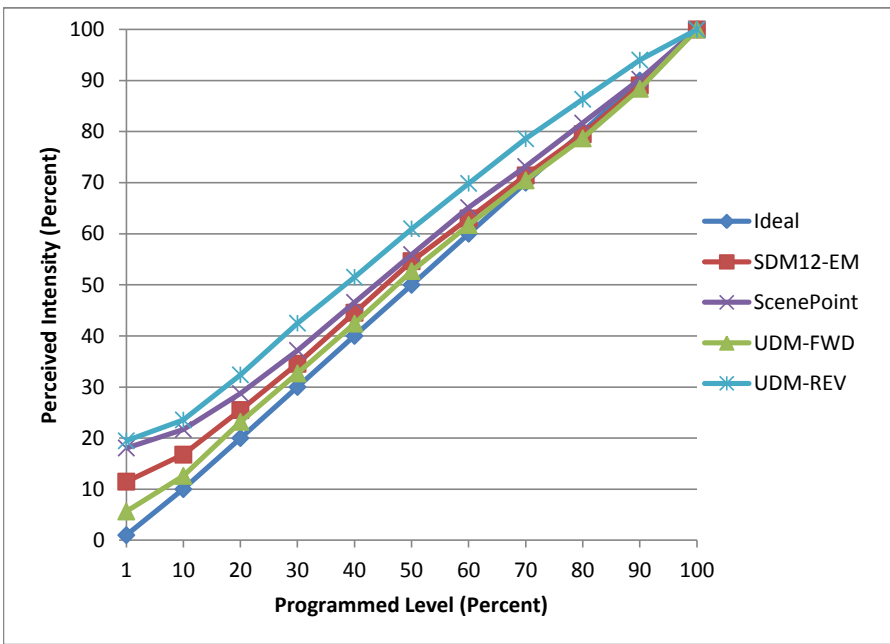


Manufacturer Halo
Model RL460WH835
Description 4 in Retrofit
Driver Integrated
Nominal Power (W) 7.3
Dimming Control Forward and Reverse
Product Range -
Test Date 6/28/2016

Dimmer Tested Against:	SDM12-EM	ScenePoint	UDM-FWD	UDM-REV
Pass/Fail	Pass	Pass	Pass	Pass
Best-Fit Power Profile:				
Minimum ON	5	7	5	5
Maximum ON	99	94	99	57
Adjust	100	100	100	100
Light Output Range (vs. non-dimmed)				
Maximum (Perceived)	95.4%	95.4%	95.2%	95.5%
Minimum (Perceived)	11.0%	17.2%	5.4%	18.6%
Minimum (Measured)	1.2%	3.0%	0.3%	3.5%

Linearity Curves (Best-fit Power Profile Applied):



Observations:

bgk