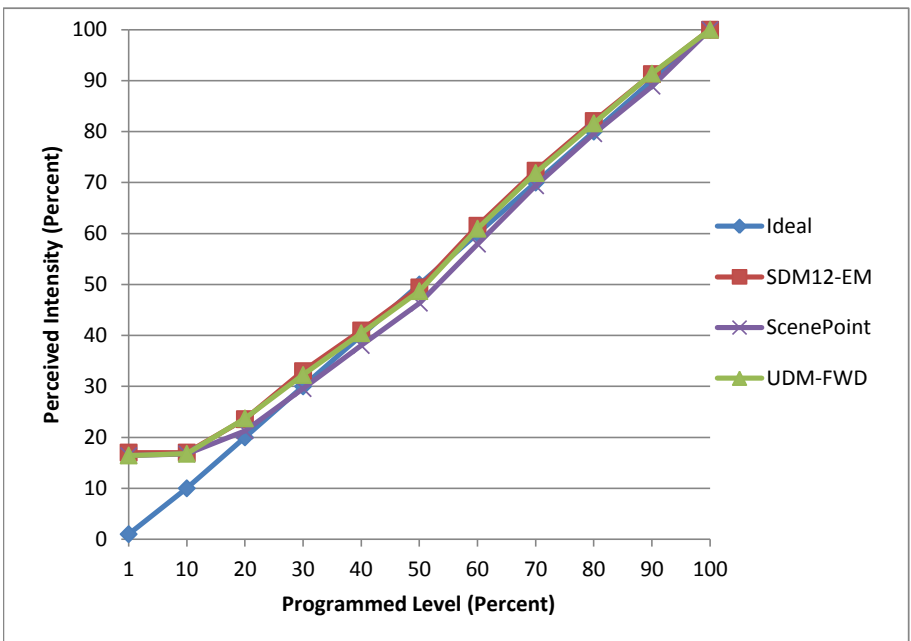


Manufacturer Halo
Model HU1048D927P
Description Light Bar
Driver 3105DC
Nominal Power (W) 20
Dimming Control Forward Phase
Product Range -
Test Date 8/7/2017

Dimmer Tested Against:	SDM12-EM	ScenePoint	UDM-FWD
Pass/Fail	Pass	Pass	Pass
Best-Fit Power Profile:			
Minimum ON	6	7	7
Maximum ON	81	85	85
Adjust	5	10	10
Light Output Range (vs. non-dimmed)			
Maximum (Perceived), 120V	95.6%	95.7%	95.6%
Minimum (Perceived)	16.3%	15.7%	15.7%
Minimum (Measured)	2.6%	2.5%	2.5%

Linearity Curves (Best-fit Power Profile Applied):



Observations:

bgk