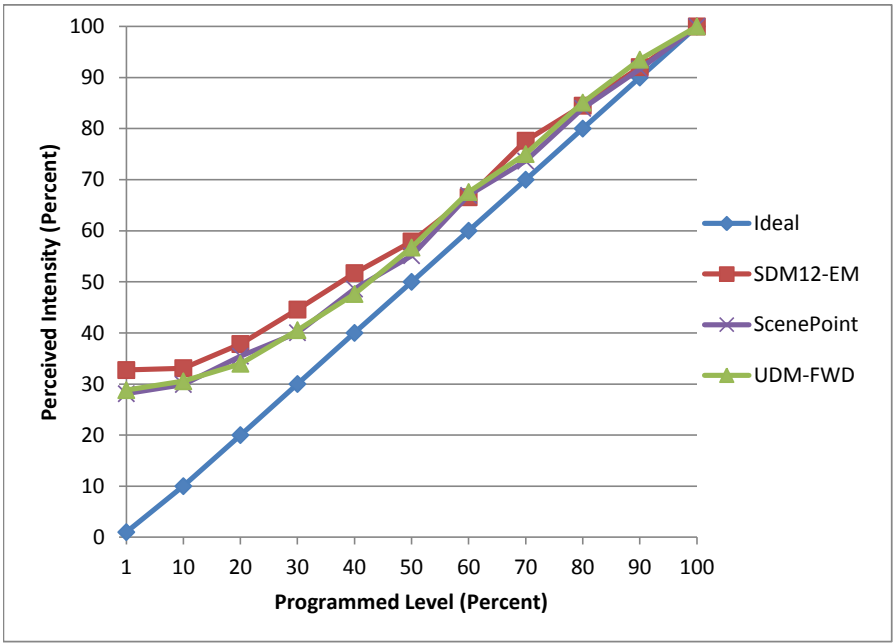


Manufacturer Halco
Model MR16FL8 830 LED
Description MR16 Lamp
Driver Juno IC44N
Nominal Power (W) 7
Dimming Control Forward
Product Range -
Test Date 6/30/2016

Dimmer Tested Against:	SDM12-EM	ScenePoint	UDM-FWD
Pass/Fail	Pass	Pass	Pass
Best-Fit Power Profile:			
Minimum ON	3	3	3
Maximum ON	19	20	22
Adjust	100	100	100
Light Output Range (vs. non-dimmed)			
Maximum (Perceived)	95.4%	95.6%	95.4%
Minimum (Perceived)	31.2%	26.9%	27.5%
Minimum (Measured)	9.7%	7.2%	7.6%

Linearity Curves (Best-fit Power Profile Applied):



Observations:
 Minimum Load Issue

bgk