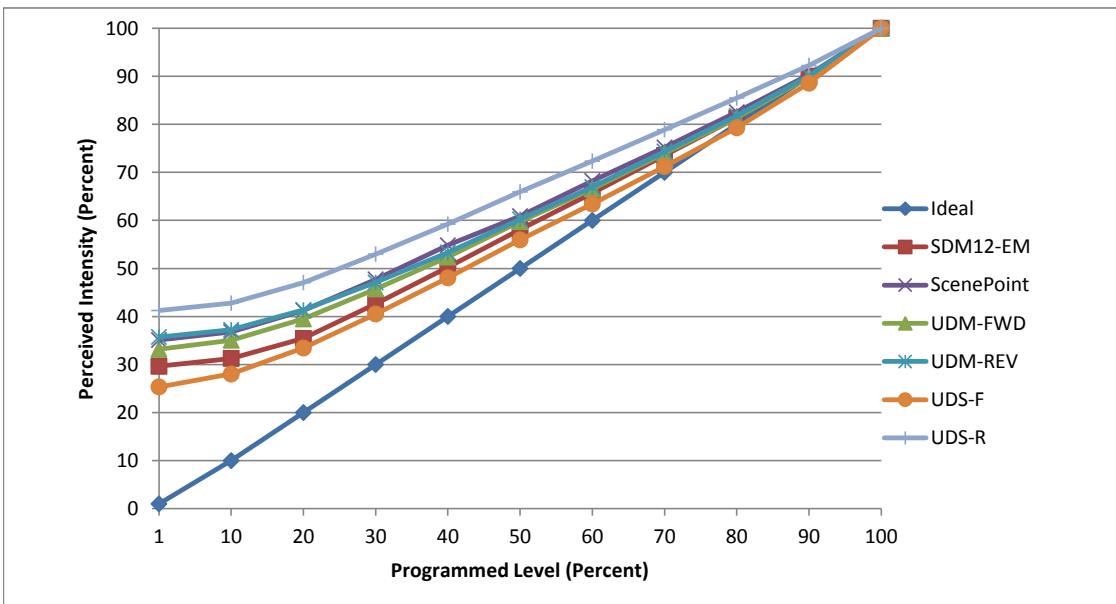


**Manufacturer** Glimmer Lighting  
**Model** GLK-VTT30D  
**Description** Candelabra  
**Driver** Integrated  
**Nominal Power (W)** 3  
**Dimming Control** Forward and Reverse Phase  
**Product Range** -  
**Test Date** 11/20/2017

Dimmer Tested Against:	SDM12-EM	SCP	UDM-FWD	UDM-REV	UDS-F	UDS-R
Pass/Fail	Pass	Pass	Pass	Pass	Pass	Pass
<b>Best-Fit Power Profile:</b>						
Minimum ON	13	17	15	17	17	13
Maximum ON	81	82	84	83	88	78
Adjust	100	100	100	100	100	100
<b>Light Output Range (vs. non-dimmed)</b>						
Maximum (Perceived), 120V	95.1%	95.5%	95.6%	95.1%	95.1%	95.1%
Minimum (Perceived)	28.2%	33.5%	31.7%	34.0%	24.1%	39.2%
Minimum (Measured)	7.9%	11.2%	10.1%	11.5%	5.8%	15.4%

Linearity Curves (Best-fit Power Profile Applied):



**Observations:**

bgk