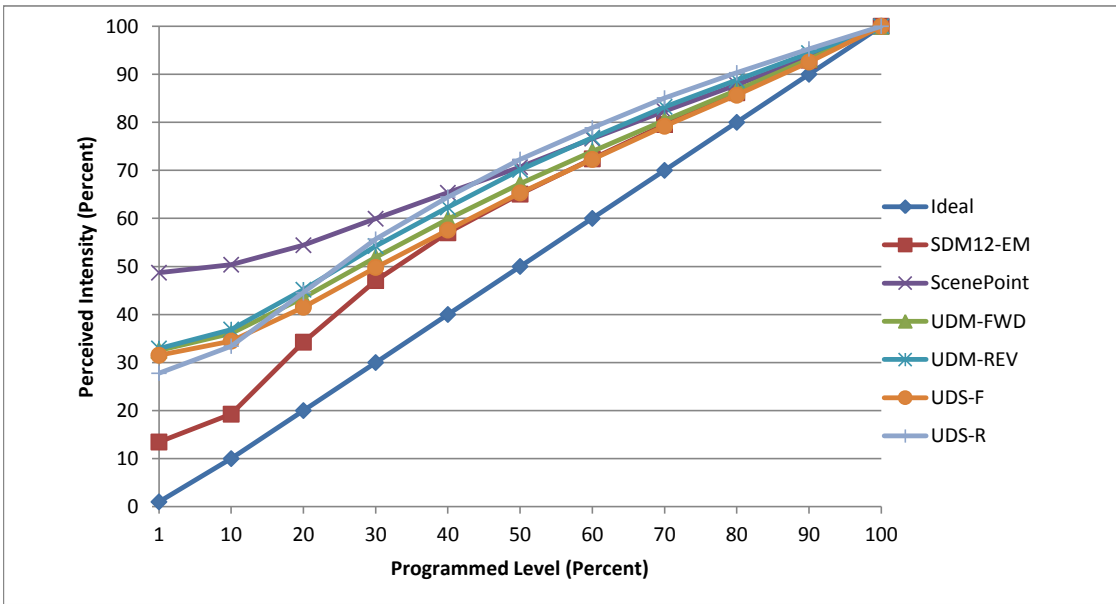


Manufacturer Glimmer Lighting
Model GLK-7PAR20-3038-V2
Description PAR 20 Lamp
Driver Integrated
Nominal Power (W) 7
Dimming Control Forward and Reverse Phase
Product Range -
Test Date 9/20/2017.

Dimmer Tested Against:	SDM12-EM	SCP	UDM-FWD	UDM-REV	UDS-F	UDS-R
Pass/Fail	Pass	Pass	Pass	Pass	Pass	Pass
Best-Fit Power Profile:						
Minimum ON	2	10	5	7	5	2
Maximum ON	75	73	75	66	77	54
Adjust	100	100	100	100	100	100
Light Output Range (vs. non-dimmed)						
Maximum (Perceived), 120V	95.2%	95.0%	95.2%	95.4%	95.1%	95.2%
Minimum (Perceived)	12.8%	46.3%	31.0%	31.4%	30.0%	26.4%
Minimum (Measured)	1.6%	21.4%	9.6%	9.9%	9.0%	7.0%

Linearity Curves (Best-fit Power Profile Applied):



Observations:

bgk