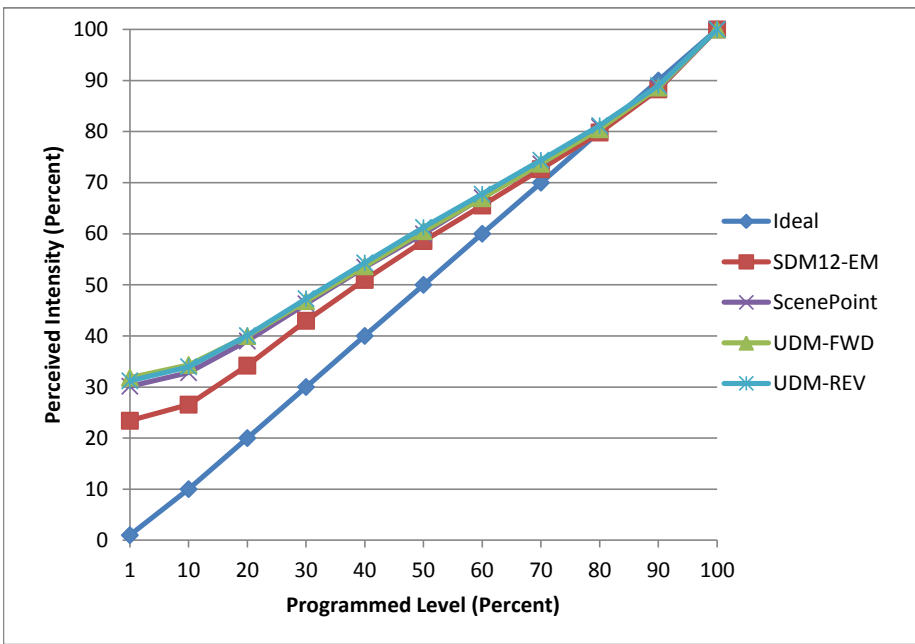


**Manufacturer** Feit  
**Model** G8 LED  
**Description** G8 Base LED  
**Driver** Integrated  
**Nominal Power (W)** 1  
**Dimming Control** Forward and Reverse  
**Product Range** -  
**Test Date** 3/3/2017

| Dimmer Tested Against:                     | SDM12-EM | Scenepoint | UDM-FWD | UDM-REV |
|--|----------|------------|---------|---------|
| Pass/Fail                                  | Pass     | Pass       | Pass    | Pass    |
| <b>Best-Fit Power Profile:</b>             |          |            |         |         |
| Minimum ON                                 | 5        | 7          | 7       | 7       |
| Maximum ON                                 | 93       | 93         | 93      | 93      |
| Adjust                                     | 100      | 100        | 100     | 100     |
| <b>Light Output Range (vs. non-dimmed)</b> |          |            |         |         |
| Maximum (Perceived)                        | 95.5%    | 95.3%      | 95.2%   | 95.8%   |
| Minimum (Perceived)                        | 22.3%    | 28.7%      | 30.3%   | 29.9%   |
| Minimum (Measured)                         | 5.0%     | 8.2%       | 9.2%    | 8.9%    |

**Linearity Curves (Best-fit Power Profile Applied):**



**Observations:**

bgk