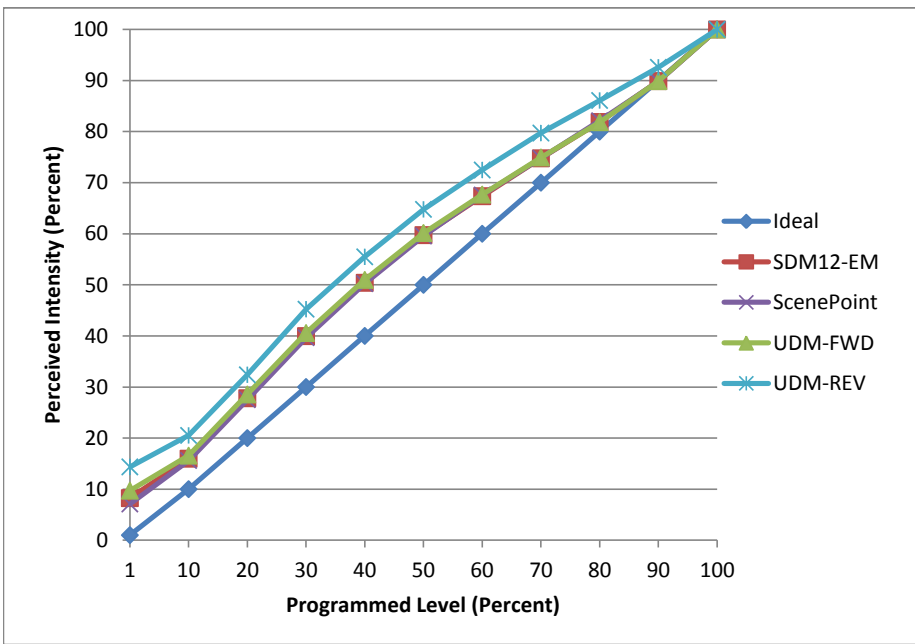


Manufacturer Elite
Model RL428-650L-DIMTR-120-30K-90-W-WH
Description 4 in Retrofit
Driver Integrated
Nominal Power (W) 10
Dimming Control Forward and Reverse
Product Range -
Test Date 11/22/2016

Dimmer Tested Against:	SDM12-EM	Scenepoint	UDM-FWD	UDM-REV
Pass/Fail	Pass	Pass	Pass	Pass
Best-Fit Power Profile:				
Minimum ON	1	1	1	1
Maximum ON	92	94	92	89
Adjust	100	100	100	100
Light Output Range (vs. non-dimmed)				
Maximum (Perceived)	95.7%	95.7%	95.5%	95.3%
Minimum (Perceived)	7.9%	6.8%	9.3%	13.7%
Minimum (Measured)	0.6%	0.5%	0.9%	1.9%

Linearity Curves (Best-fit Power Profile Applied):



Observations:

bgk