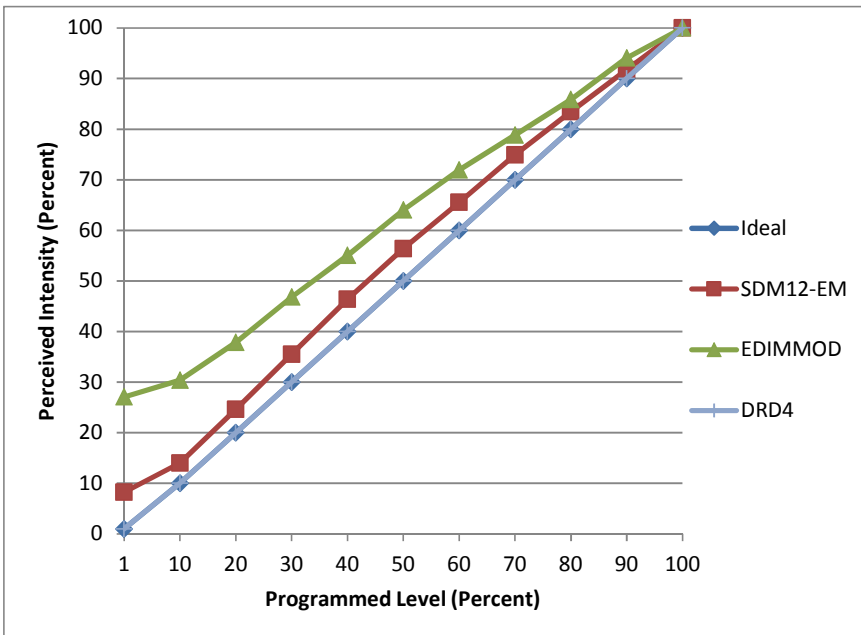


**Manufacturer** Element  
**Model** E3LRF-LH8274DI  
**Description** IC-Rated LED Downlight, 3"  
**Driver** L.T.F. DA18W44-C40BF-0000  
**Nominal Power (W)** 18  
**Dimming Control** Forward- and Reverse-phase  
**Product Range**  
**Test Date** 1/21/2015

Dimmer Tested Against:	SDM12-EM	EDIMMOD	
Pass/Fail	Pass	Pass	
<b>Best-Fit Power Profile:</b>			
Minimum ON	2	3	
Maximum ON	70	65	
Adjust	100	100	
<b>Light Output Range (vs. non-dimmed)</b>			
Maximum (Perceived)	94.8%	95.7%	
Minimum (Perceived)	7.8%	25.9%	
Minimum (Measured)	0.6%	6.7%	

**Linearity Curves (Best-fit Power Profile Applied):**



**Observations:**

Slight buzz from fixture detected when dimmed forward-phase, but dimming curve is significantly better forward-phase than reverse-phase.